



AGRI

EQUIPMENT FOR SLURRY HANDLING

Quality is the **key**
in all our **products**

LJM
Lind Jensen

01.

RPS 4 Pulling station

LJM's RPS pulling station is for the farmer who needs a flexible, simple and durable solution

s. 4

02.

CPS 4 Pulling station

Pulling station with chain - the tested solution with over 1000 installations

s. 8

03.

PSF Pulling station

PSF flexible wire-type barn cleaner for the farmer who needs a pulling station under slats

s. 12

04.

PSW 4 Pulling station

Wall mounted compact pulling station, with flexible installation options

s. 16

05.

WAP Pulling station

The WAP 2 pulling station is a flexible solution especially suitable for unequal number of dung passages

s. 20

06.

WPS Pulling station

WPS flexible pulling stations for the farmer with smaller or larger animal housings

s. 24



Content

07. Scrapers
Scrapers for all types of floors. Slatted floors, solid floors and floors with rubber coating s. 28

08. Submersible agitators
LJM has a complete product portfolio of submersible agitators ranging from 1.5 kW to 18.5 kW s. 30

09. Slalom mixers
The handling of the slurry becomes far easier and faster when the slalom mixers are designed for the task s. 32

10. Submersible pumps
All LJM submersible pumps can be delivered on a fixed bracket or with a simple coupling system s. 34

11. Dry mounted pumps
Where conditions are suitable, a dry mounted pump is an economically beneficial and highly durable s. 36

12. Piston pump
Suitable for animal housings where the slurry needs to be pumped efficiently over longer distances. s. 38

01.

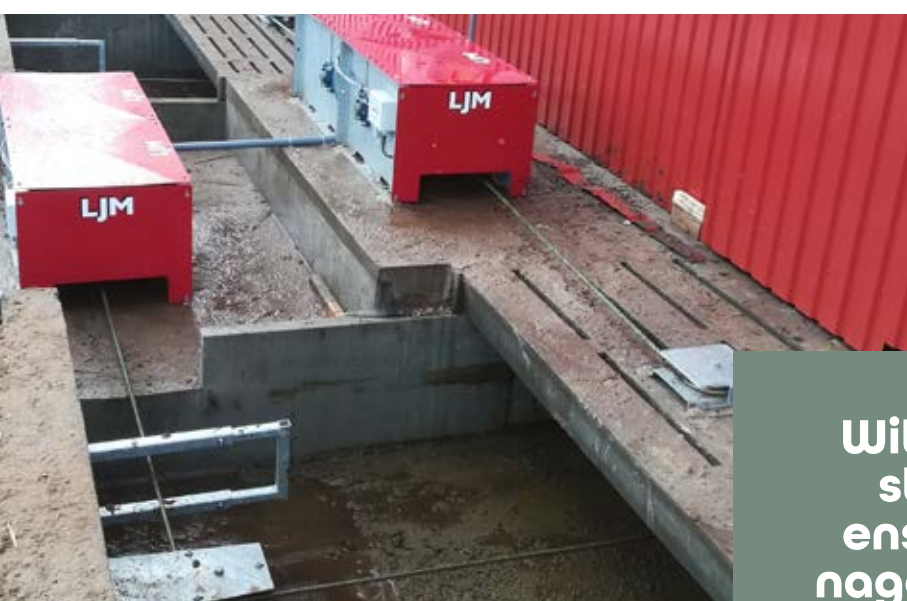
RPS 4

PULLING STATIONS

LJM's RPS pulling station is for the farmer who needs a flexible, simple and durable solution

The pulling station can be used for both new construction or modification of existing animal housing. With an RPS pulling station, you are ensured a well-managed control that is freely programmable. You are also guaranteed full freedom, as well as a facility that is adapted to the type of animal housing and the length of the dung passage.

- ✓ Can be floor mounted and wall mounted
- ✓ Length up to 150m. with rope / taifun wire
- ✓ Frost protection
- ✓ Very low energy consumption
- ✓ Free programmable with timer
- ✓ For all floor types, above and below slats
- ✓ We can offer a complete solution, pulling station, scrapers, corner wheels and electrical control, etc.



With an RPS pulling station, you are ensured a well-managed control that is freely programmable



**Minimum daily
maintenance, easy
to handle and
it works
very well**

Kristian Dalgaard - Dalgaard Mælkeproduktion



RPS PLANT FOR SAND IN BED BOOTHS

The liquid manure system from LJM can be used together with sandy liquid manure. We have designed our products so that they have the fewest possible wear parts and these wear parts can be replaced.

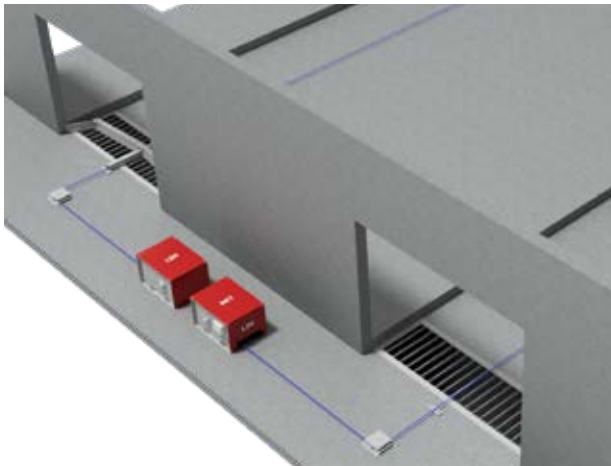
Furthermore, we use high-strength HARDOX steel where needed. Many farmers are very aware that sand causes wear and tear on their liquid manure equipment. However, the advantages of the sand outweigh the disadvantages.

"Here, at Dalgaard Mælkeproduktion, we use sand in our bed booths and we have chosen the RPS manure scraper system from LJM for large-scale barns of up to 100 m. We are very pleased with this solution. The daily maintenance is minimal and even though there is some wear and tear when you use sand, it is easy to replace the worn parts."

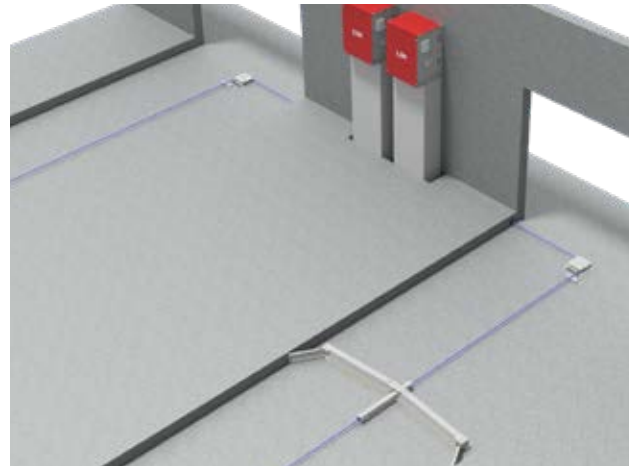
Kristian Dalgaard - Dalgaard Mælkeproduktion

RPS 4 PULLING STATION

Model	Speed	Motor	Drum	Max. length	Type
RPS 270	3-4 m. /min.	0.55 kW	Ø 273 mm.	140 m.	Rope/Taifun wire
RPS 460	3-4 m. /min.	0.75 kW	Ø 457 mm.	240 m.	Rope/Taifun wire



Example of a floor mounted installation. This installation is recommended if there is room for an installation outside the animal housing.

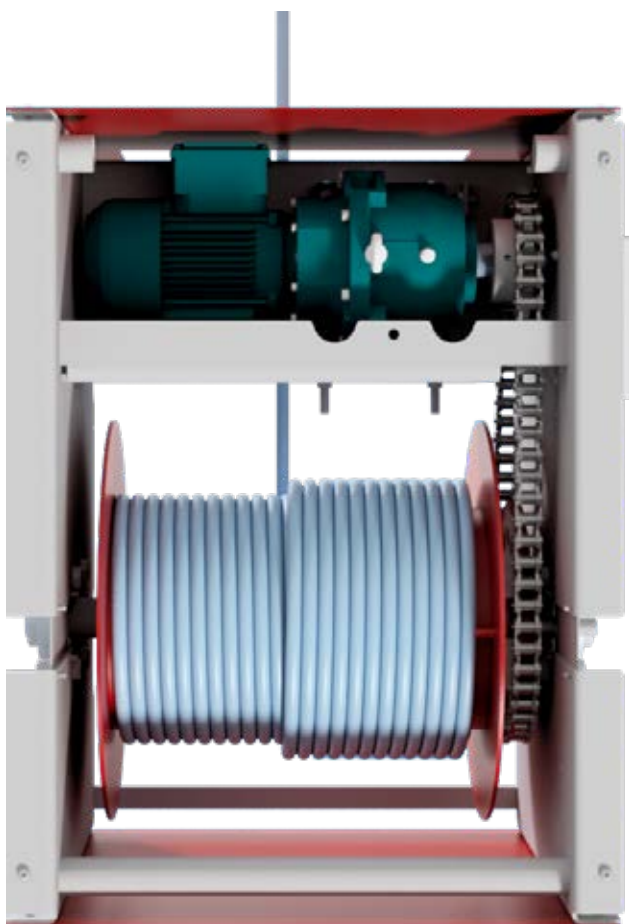


Example of a wall mounted installation. This installation is recommended if there is a lot of space in the animal housing or if you want an installation inside the building.



The pulling station can be used for both new construction or modification of existing animal housing





**For the farmer
who needs a
flexible, simple and
durable solution**



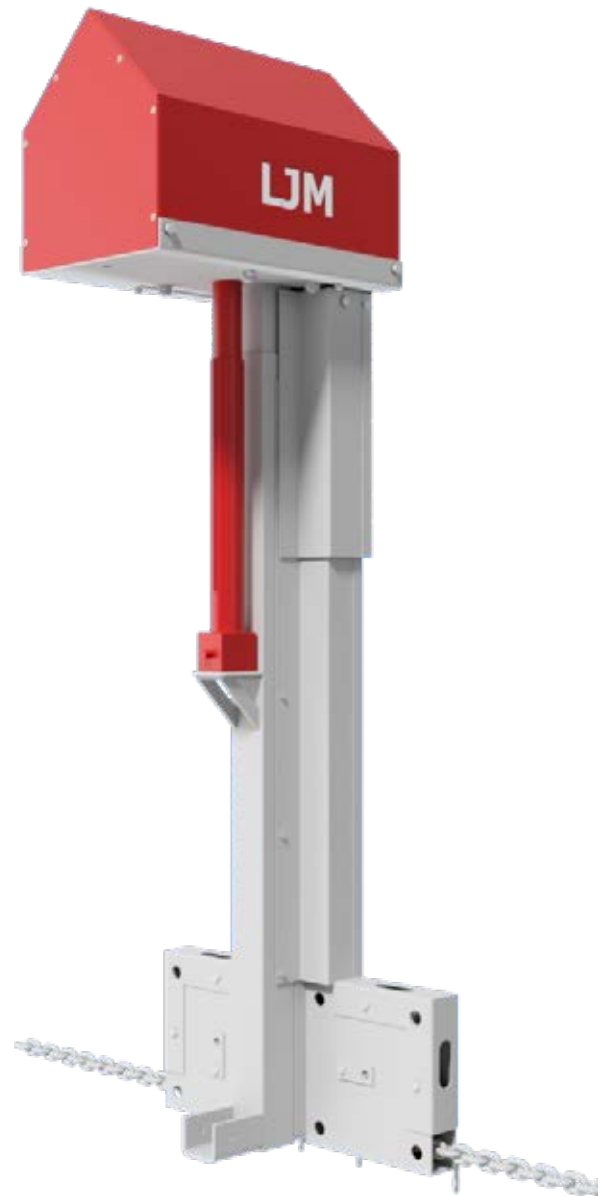
02.

CPS 4 PULLING STATIONS

Pulling station with chain - the tested solution with over 1000 installations

With a CPS pulling station, you are ensured a well-managed control that is programmable. You are guaranteed full freedom, as well as a facility that is adapted to the type of animal housing and the length of the dung passages.

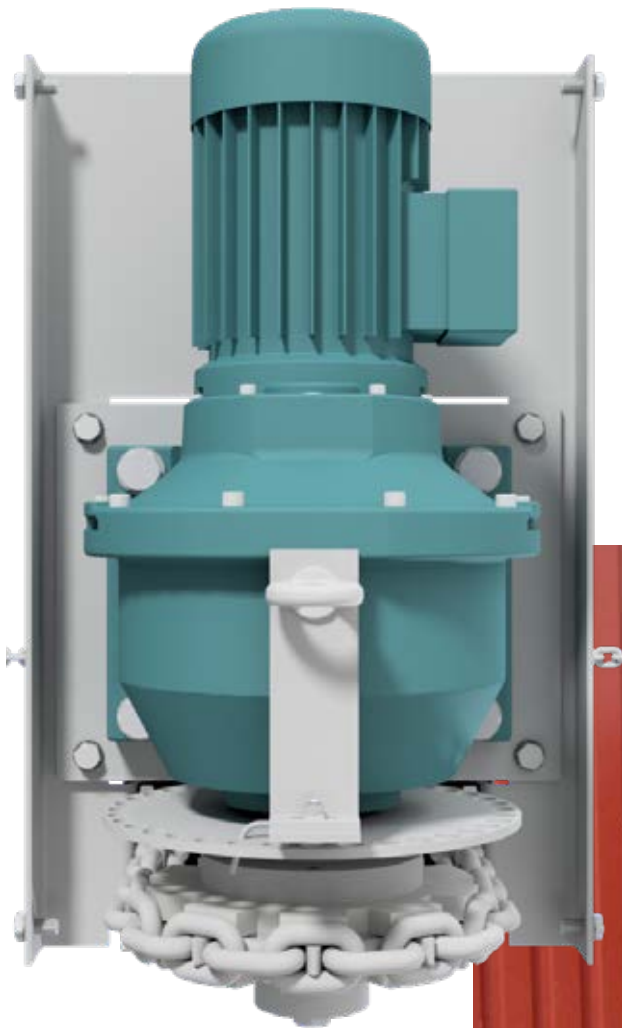
Can be used for solid floors.



With a CPS pulling station, you are ensured a well-managed control that is programmable



The pulling station
can be used
for both new
construction or
modification
of existing
animal housing



CPS ENSURES YOU A NUMBER OF **BENEFITS**

- ✓ The manure is removed daily from the animal housing improving indoor climate
- ✓ Frost protection
- ✓ Low energy consumption – only 0.75 kW
- ✓ Automatic start / stop - can be started up to 24 times a day as desired
- ✓ The traction is adjustable for extra safety
- ✓ Standard with digital counter for correct length
- ✓ Tensioning system of the chain is integrated in the gear motor frame
- ✓ Optional manual / automatic calibration of end and stop function
- ✓ We can offer a complete solution, pulling station, scrapers, corner wheels and electrical control, etc.



Model	Speed	Motor	Drum	Max. length	Type
CPS 4	4 m. /min.	0,75 kW	Ø210	100 m.	Chain



03.

PSF

PULLING STATIONS

PSF flexible wire-type barn cleaner for the farmer who needs a pulling station under slats

PSF is a simple and efficient scraper system for channels in all types of animal housing.

LJM's Wire-type barn cleaner is a proven, very simple and solid construction, which requires minimum maintenance.

PSF 12+20 is built with a 1.1 kW engine with a drum head. Depending on the dung passage length, the PSF can draw up to 4 channels in the same system.

PLC control with built in step function, clock and rotation sensor.

The dragline showels are delivered in widths up to 4.0 m.

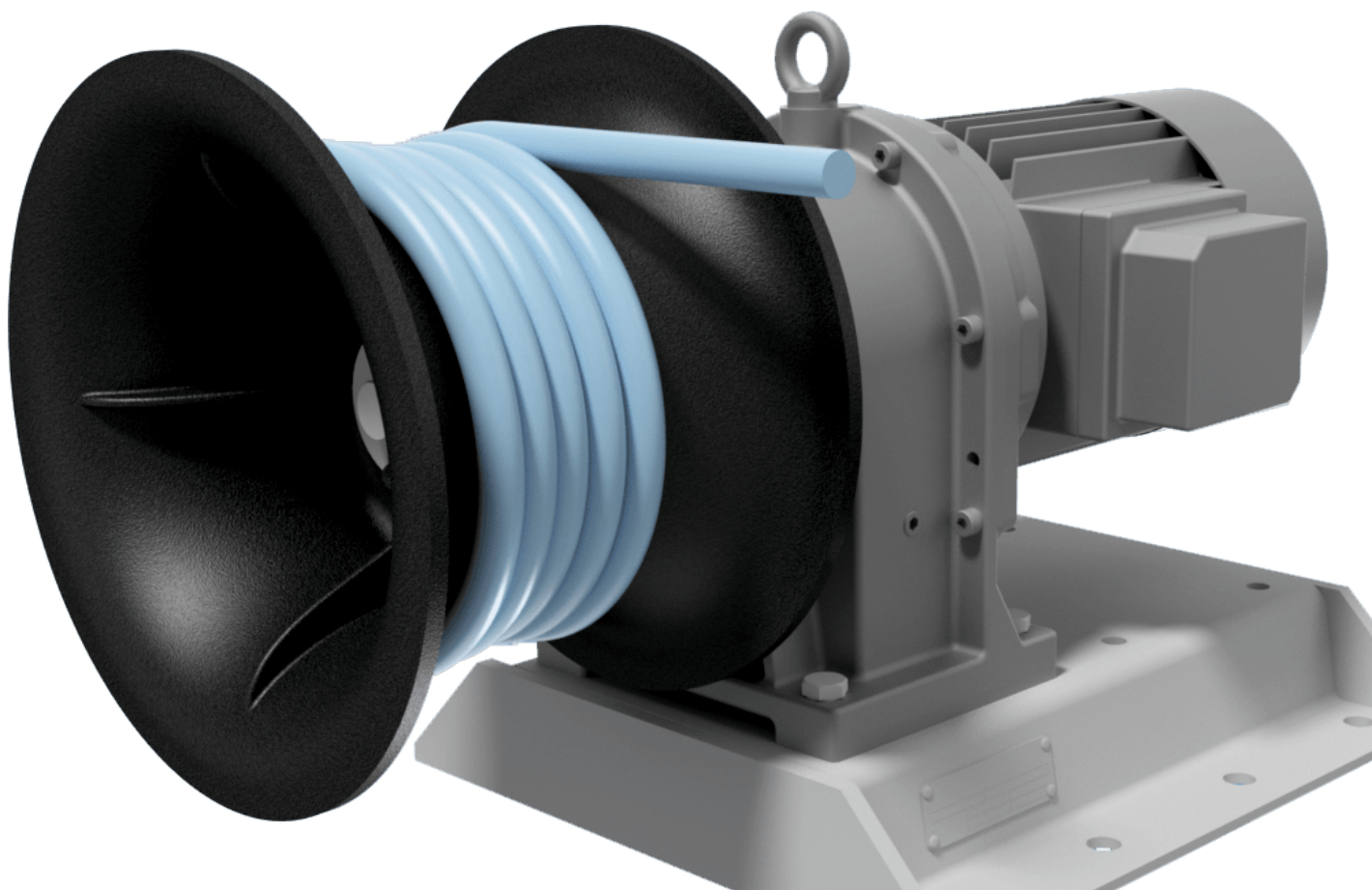
Strong construction, where all steel parts are hot galvanized, which ensures long durability.



**Strong construction,
where all steel parts
are hot galvanized,
which ensures
long durability**




For the farmer
who needs a
pulling station
under slats



PSF ENSURES YOU A NUMBER OF **BENEFITS**

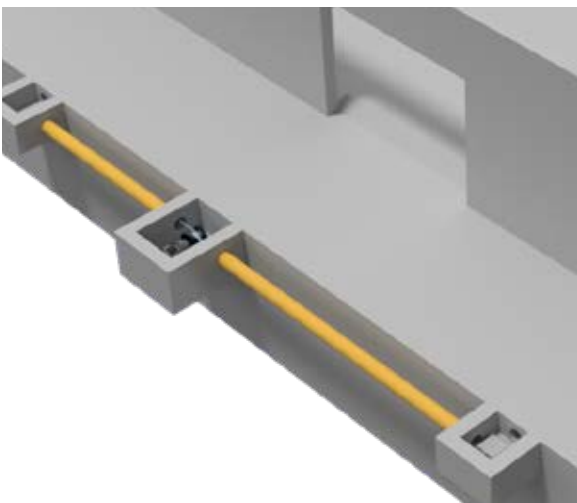
- ✓ The manure is removed daily from the animal housing improving indoor climate
- ✓ Effective reduction of ammonia evaporation
- ✓ Can be mounted on the wall or the floor
- ✓ Effective and simple system
- ✓ We can offer a complete solution, wire-type barn cleaner, dragline showels, corner wheels and electrical control, etc.



**PSF is a simple and
efficient scraper
system for channels in
all types of
animal housing**



Model	Speed	Motor	Drum	Max length	Type
PSF 12	12 m / min.	1,1 kW	Ø 180 mm.	80 m.	Taifun Wire
PSF 20	20 m / min.	1,1 kW	Ø 180 mm.	80 m.	Taifun Wire



05.

PSW 4

PULLING STATION

Wall mounted compact pulling station, with flexible installation options

Can be used over slats, solid floors - or under slats.

Can Draw up to 4 dung passages depending on lengths with an "endless" taifun wire.

The PSW 4 is designed with a 0.55 kW engine and has a speed at approx. 4.5 m. / min.

PSW 4 is easy to install in both new and existing animal housings.

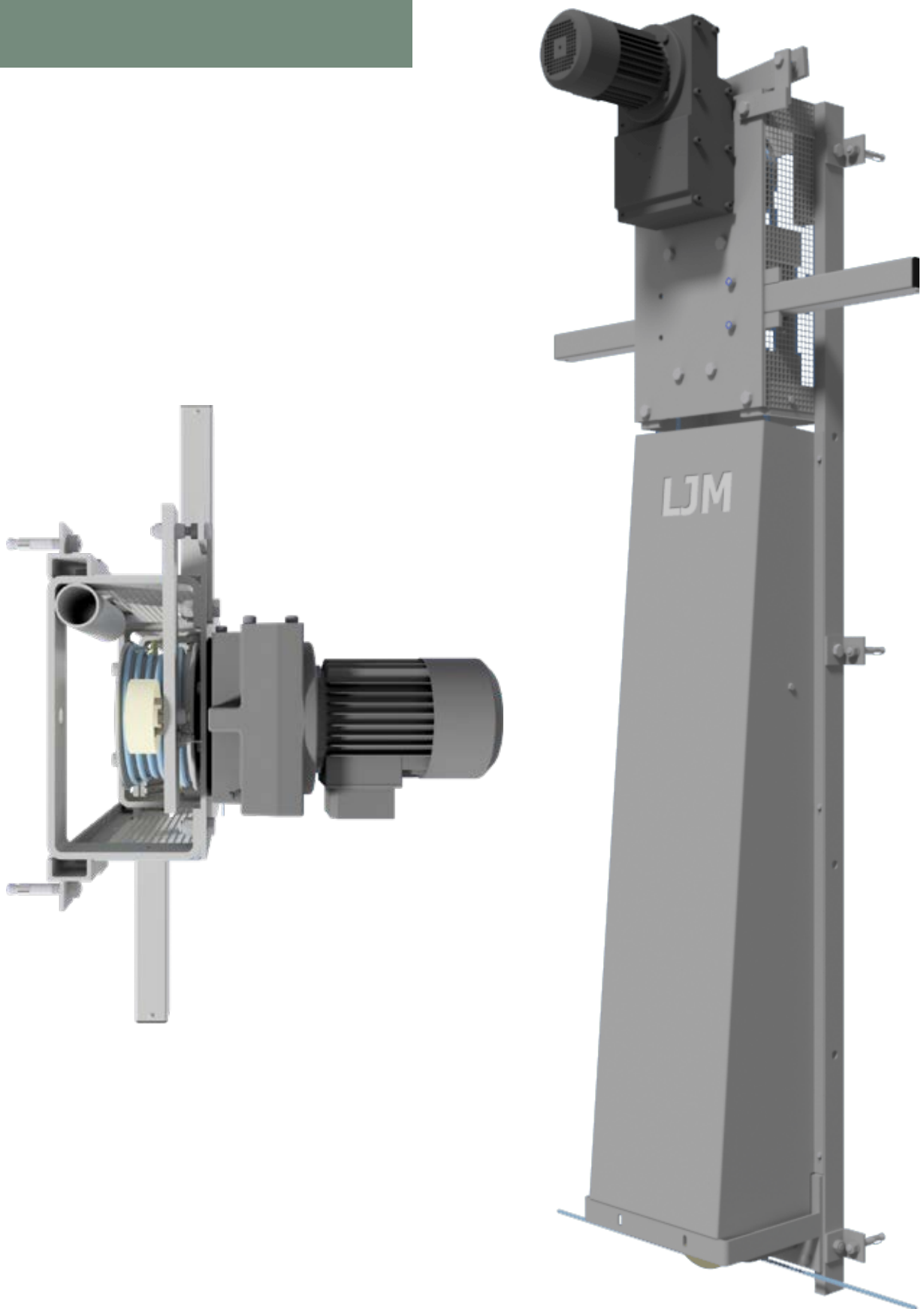
PLC control enables the choice of pausing and operating times.



**PSW 4 is easy to
install in both
new and existing
animal housings**



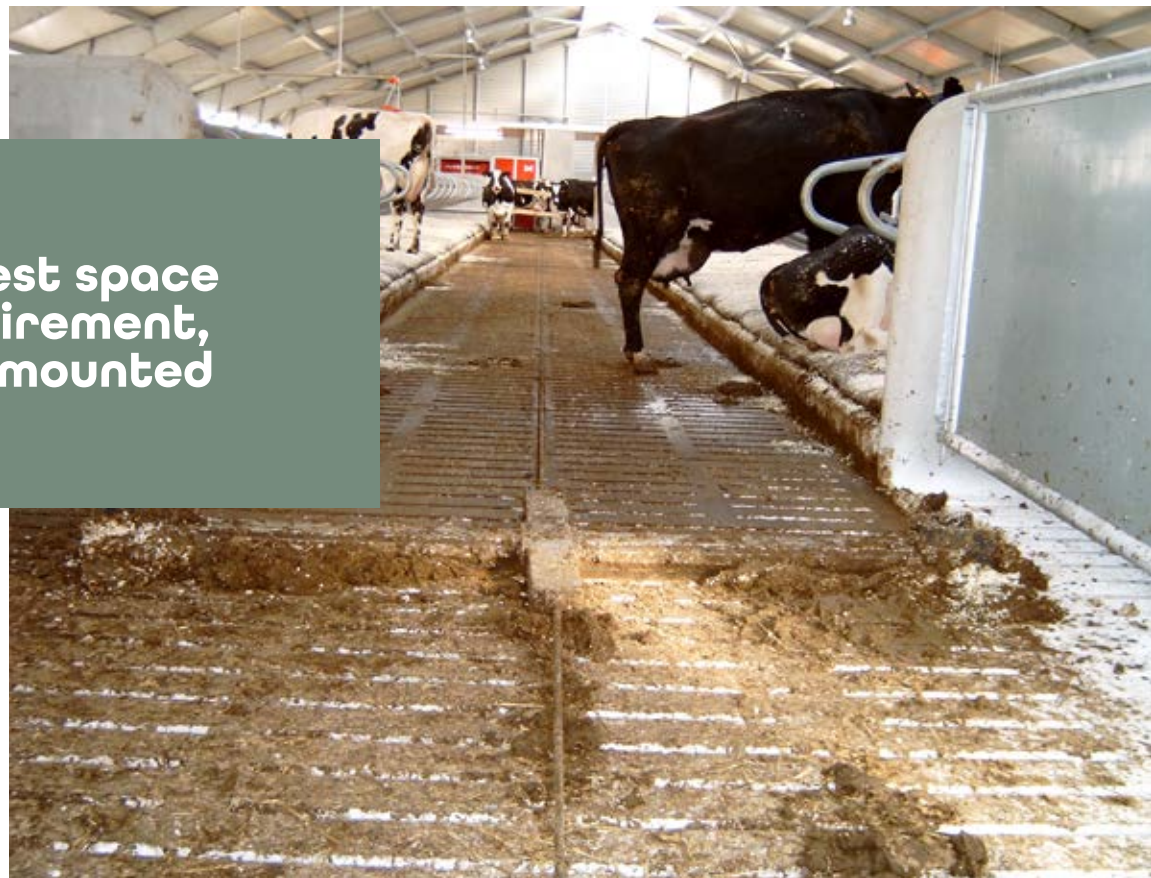
Can be used over
slats, solid floors
or under slats



PSW 4 ENSURES YOU A NUMBER OF **BENEFITS**

- ✓ The manure is removed daily from the animal housing improving indoor climate
- ✓ Efficient and simple solution
- ✓ Can draw up to 4 dung passages
- ✓ Modest space requirement, wall mounted
- ✓ Can be installed both outside and inside the animal housing
- ✓ We can offer a complete solution, pulling station, scrapers, corner wheels and electrical control, etc.

**Modest space
requirement,
wall mounted**



Model	Speed	Motor	Drum	Max length	Type
PSW 4	4,5 m / min.	0,55 kW	Ø 178 mm.	70 m.	Taifun Wire



05.

WAP

PULLING STATION

The WAP 2 pulling station is a flexible solution especially suitable for unequal number of dung passages

The pulling station is reliable and suitable for animal housings with an unequal number of dung passages. The pulling station is used for floors with slats or for solid floors. The pulling station can be used for both above and below slats.

WAP 2 is equipped with a 0.37 kW motor and runs at a speed of approx. 2 m. / min.



The pulling station
can be used for
both above and
below slats

Flexible solution
suitable for
unequal number of
dung passages



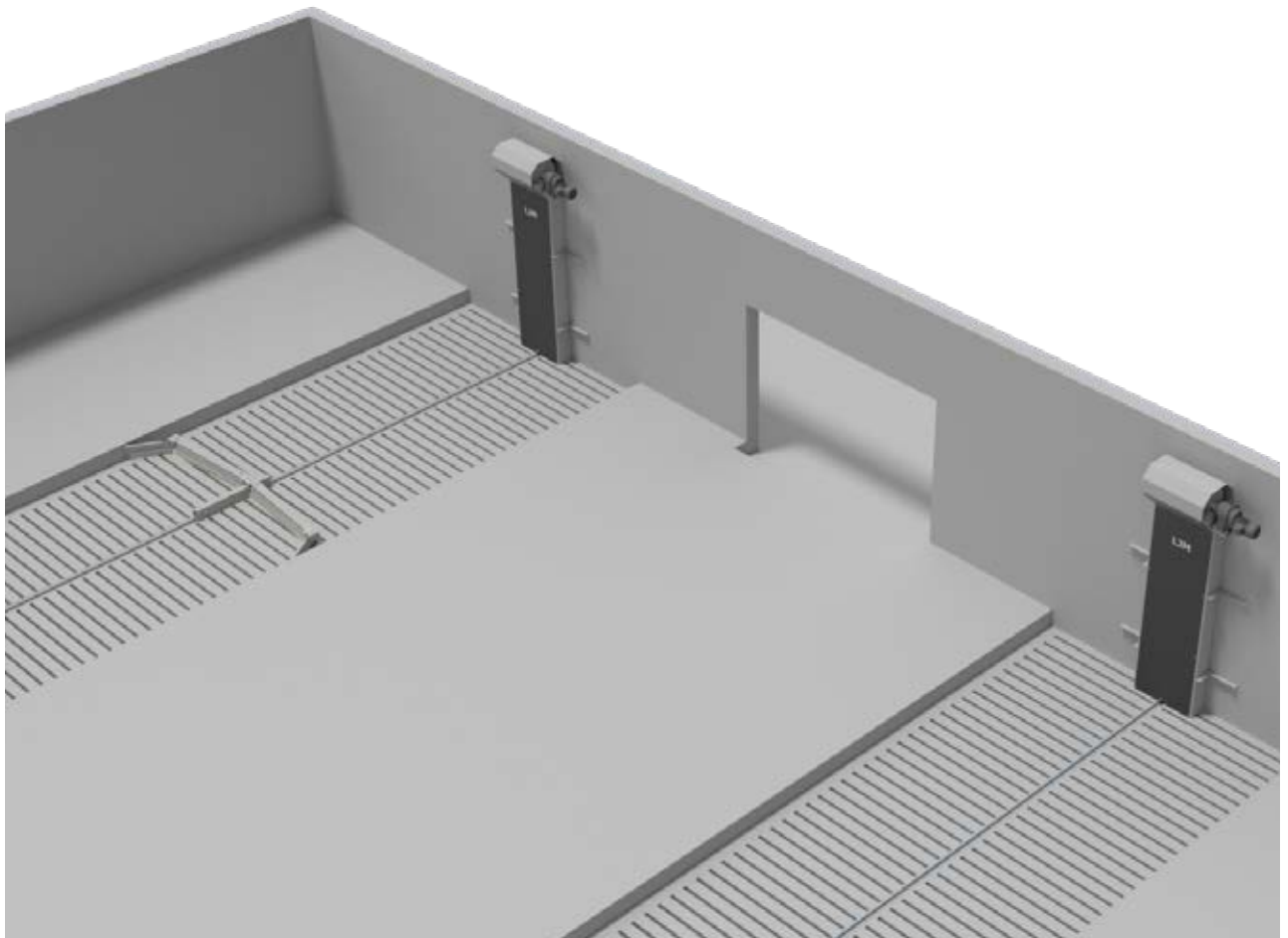
WAP 2 ENSURES YOU A NUMBER OF **BENEFITS**

- ✓ The manure is removed daily from the animal housing and improves the indoor climate
- ✓ Effective and simple system
- ✓ Can be installed both outside and inside the animal housing
- ✓ Opportunity for total solution, pulling station, scrapers, corner wheels and electrical control, etc.



**Can be installed
both outside and
inside the
animal housing**

Model	Speed	Motor	Drum	Max length	Type
WAP 2	2 m / min.	0,37 kW	Ø 114 mm.	80 m.	Robe/Taifun



06.

WPS

PULLING STATIONS

WPS flexible pulling stations for the farmer with smaller or larger animal housings

WPS from LJM - Lind Jensen Agri is available in 3 different sizes.

WPS 650 is designed for the farmer who has smaller dung passages, the pulling station can handle lengths up to 70 m.

WPS 1200 is designed for the farmer who has medium-range dung passage lengths, the pulling station can handle lengths up to 130 m.

WPS 1600 is designed for the farmer who has long range dung passages, the pulling station can handle lengths up to 245 m.

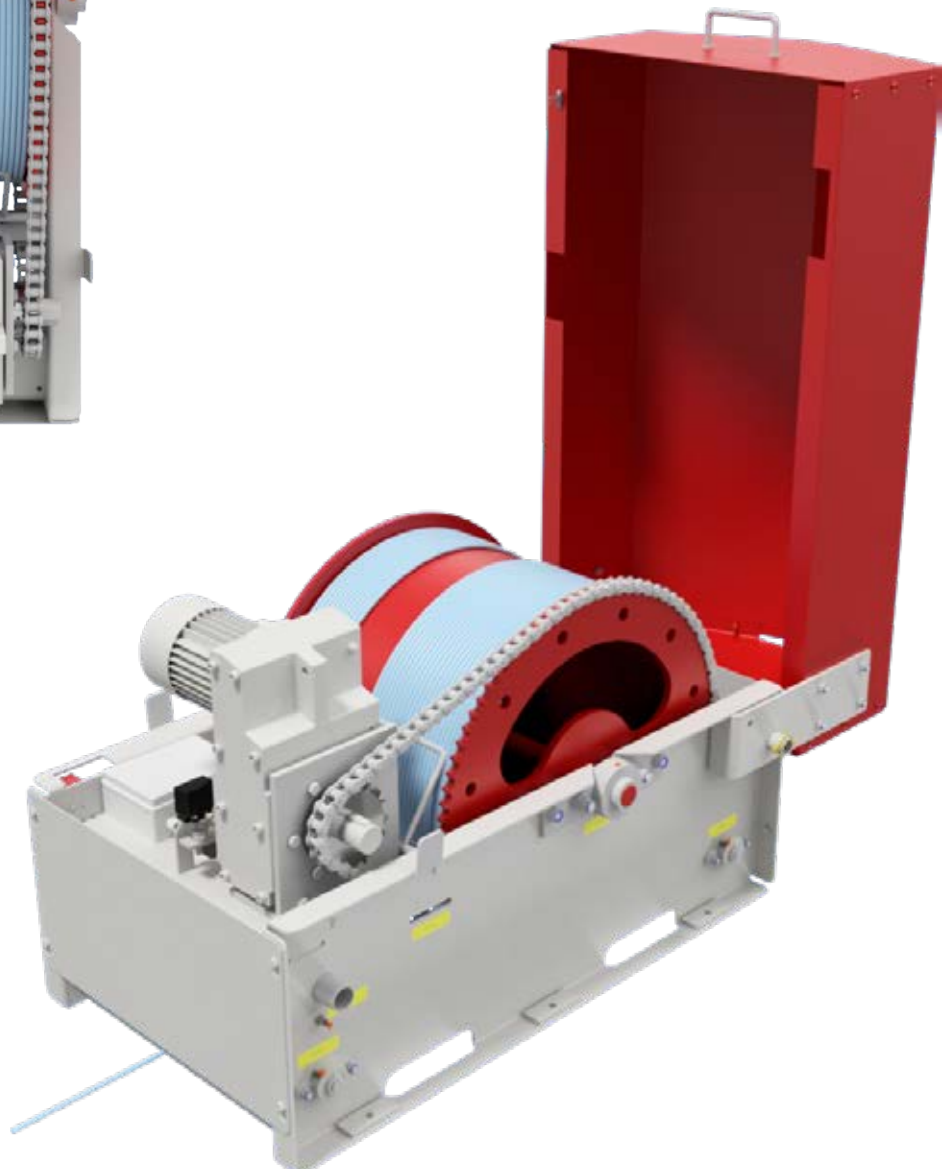
With our WPS, we also offer other combination options for your animal housings and we can always assist you with advice so you get the right setup for your animal housing.



We can always
assist you with
advice so you get
the right setup
for your
animal housing



**WPS Flexible pulling
stations for the
farmer with
smaller or larger
animal housings**



WPS ENSURES YOU A NUMBER OF **BENEFITS**

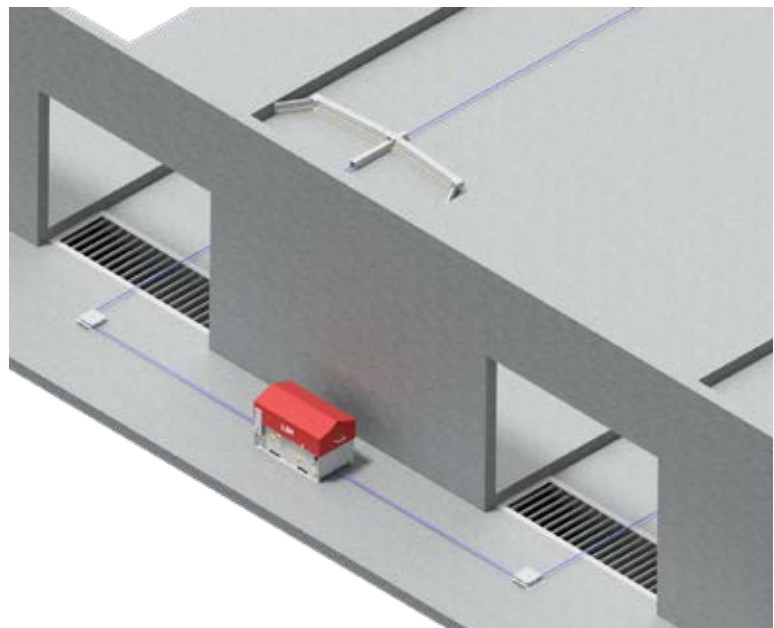
- ✓ Energy efficient motor with low energy consumption
- ✓ Programmable with timer and PLC
- ✓ For all floor types, above and below slats
- ✓ Frost protection
- ✓ We can offer a complete solution, pulling station, scrapers, corner wheels and electrical control, etc.



**For all floor
types, above
and below slats**

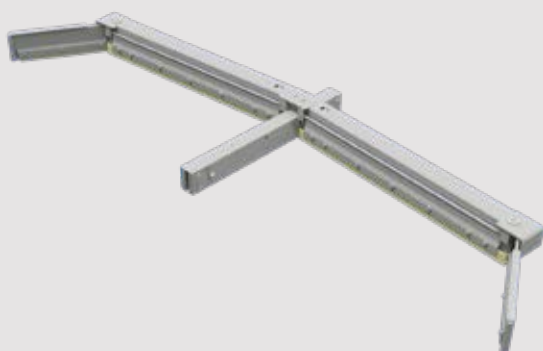


Model	Speed	Motor	Drum	Max. length	Type
WPS 650	3 m / min.	0.55 kW	Ø 615 mm.	70 m.	Wire
WPS 1200	3 m / min.	0.55 kW	Ø 1200 mm.	130 m.	Wire
WPS 1600	4 m / min.	1.1 kW	Ø 1600 mm.	245 m.	Wire



07. SCRAPERS

SCRAPER WITH WINGS



Type of installation	Hydraulic, wire -and chain pulling stations
Floor type	All floor types
Width	170 - 470 cm.

SCRAPER WITHOUT WINGS



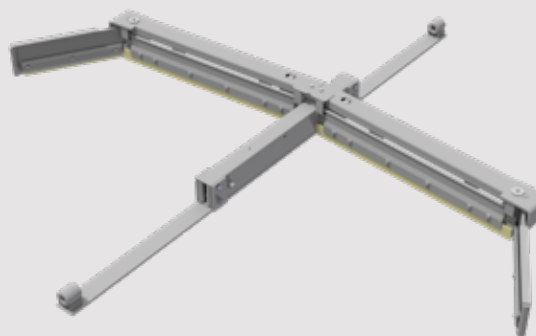
Type of installation	Hydraulic, wire -and chain pulling stations
Floor type	All floor types
Width	170 - 470 cm.

SCRAPER - DRAINAGE CHANNELS



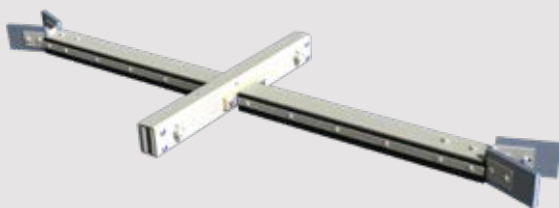
Type of installation	Hydraulic, wire -and chain pulling stations
Floor type	Floors with drainage systems
Width	170 - 470 cm.

FLAP SCRAPER W. SLIDE RAIL



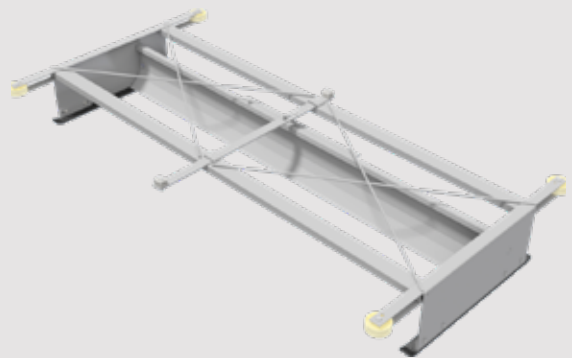
Type of installation	Hydraulic, wire -and chain pulling stations
Floor type	All floor types
Width	170 - 470 cm.

SLAT SCRAPER



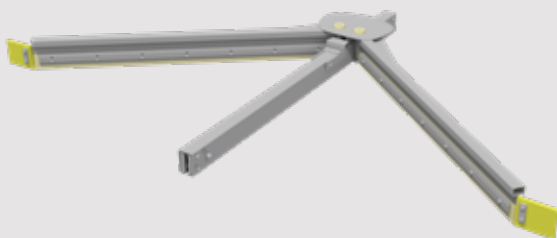
Type of installation	Hydraulic, wire -and chain pulling stations
Floor type	Slatted floors
Width	170 - 470 cm.

DRAGLINE SHOVEL



Type of installation	Wire pulling station
Floor type	Under slats and drainage systems
Width	50 - 400 cm.

DELTA SCRAPER



Type of installation	Hydraulic, wire -and chain pulling stations
Floor type	All floor types
Width	170 - 470 cm.

DELTA REVERSIBLE SCRAPER



Type of installation	Hydraulic, wire -and chain pulling stations
Floor type	All floor types
Width	170 - 470 cm.

08.

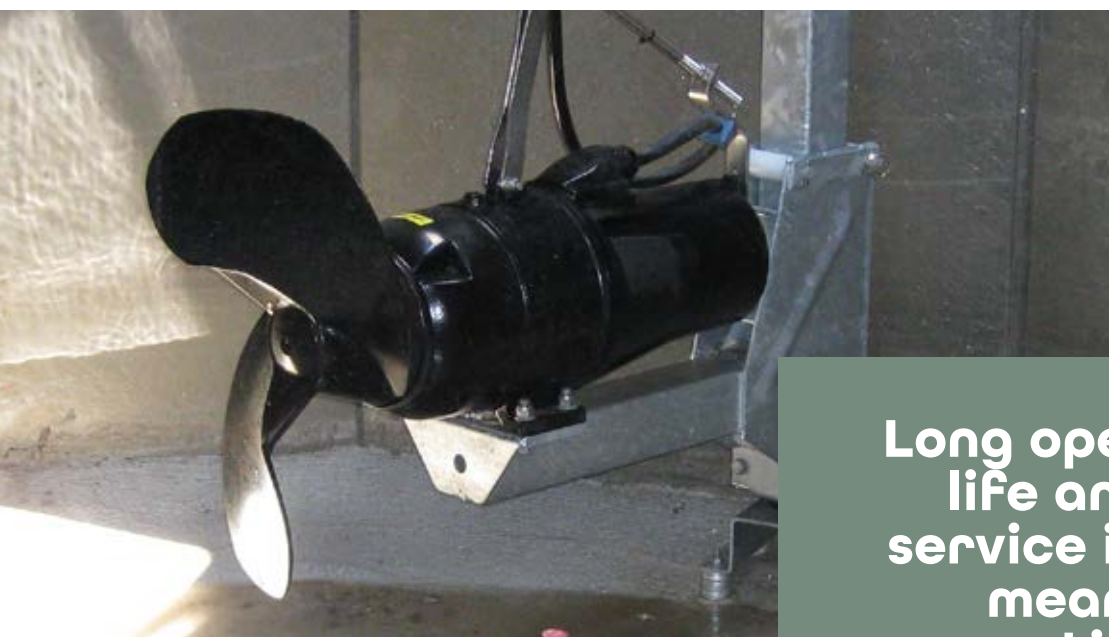
SUBMERSIBLE AGITATORS

LJM has a complete product portfolio of submersible agitators ranging from 1.5 kW to 18.5 kW

All of our larger agitators are equipped with planetary gear with hydro-dynamic propellers that makes the mixing process problem-free, even in the largest tanks and slurry with high dry matter content.

This applies to all Lind Jensen slurry agitators

- ✓ High quality and high performance
- ✓ Unique all-welded propeller design
- ✓ Heavy-duty moulded construction
- ✓ Low energy consumption. Efficient power transmission
- ✓ Genuine spare parts at reasonable prices
- ✓ Long operational life and long service intervals mean low operating costs
- ✓ Unique, self-cleaning propeller design with high efficiency
- ✓ Built on more than 50 years of experience with handling liquid manure



**Long operational
life and long
service intervals
mean low
operating costs**





Model	Type	kW	Propeller Diameter mm.	RPM	Weight kg.
OMDS S112 - 2S	Mixer	1,5 kW	380	750	82
OMDS S112 - 2S	Mixer	2,5 kW	440	750	85
OMPG S100 - 2S	Agitator	2,2 kW	550	268	141
OMPG S100 - 2S	Agitator	3,0 kW	540	350	145
OMPG S100 - 2S	Agitator	4,0 kW	550	350	150
OMPG S132 - 2S	Agitator	5,5 kW	600	350	235
OMPG S132 - 2S	Agitator	7,5 kW	640	350	245
OMPG R160 - 2S	Agitator	11,0 kW	800	268	325
OMPG R160 - 2S	Agitator	15,0 kW	850	268	340
OMPG R160 - 2S	Agitator	18,5 kW	870	291	355



09.

SLALOM MIXERS

TYPE OMPG-K

The handling of the slurry becomes far easier and faster when the slalom mixers are designed for the task

Lind Jensen has developed a strong assortment of slalom mixers, intended to be placed in slurry channels, where daily mixing prevents the development of gas and crust. The slalom mixer is particularly suitable for installment in both cross-channels and slalom systems.

The slalom slurry mixer is mounted in a bracket, built in strong, hot-galvanized plate and the daily mixing is automatically controlled via a timer.

Lind Jensen's OMPG slalom mixers are among the most powerful slalom mixers on the market. It is designed for slurry with high dry matter content with planetary gear and a super hydro-dynamic propeller.

Brackets:

All handling equipment is made from hot-galvanized or stainless, acid-proof steel.

**Lind Jensen's OMPG
slalom mixers are
among the most
powerful slalom
mixers on the market**





Model	Type	kW	Propeller Diameter mm.	RPM	Weight kg.
OMPG K132 - 2S	Slalom Mixer	7,5 kW	650	268	270
OMPG K160 - 2S	Slalom Mixer	11,0 kW	650	268	330
OMPG K160 - 2S	Slalom Mixer	15,0 kW	650	268	330
OMPG K160 - 2S	Slalom Mixer	18,5 kW	650	268	365



10.

WE DELIVER **SUBMERSIBLE PUMPS** OF **HIGH QUALITY**

All LJM submersible pumps can be delivered on a fixed bracket or with a simple coupling system

With LJM's slurry pump models, you get the solution for your needs and requirements for an efficient pumping process. We deliver submersible pumps of high quality in many sizes from 1.5 kW to 18.5 kW.

This applies to all Lind Jensen submersible slurry pumps

- ✓ Built-in cutting system for the fine shredding of straw and feed residues
- ✓ Quality pumps with proven long-lasting durability
- ✓ Wide range of mounting brackets for all tank types
- ✓ Can be mounted with a fixed foot or slide bracket as needed



**We deliver
submersible pumps
of high quality in
many sizes**



Model	kW	Max. capacity m3/h	Max. head	Outlet dimension	Weight kg.
DPAS S090	1,5 kW	100	6	2,5"	57
DPAE S100	3,0 kW	106	8,9	4"	91
DPFH S132	5,5 kW	252	10,1	4" / 6"	162
DPFH S132	7,5 kW	265	14,5	4" / 6"	165
DPFH R160	11,0 kW	358	13,3	6"	264
DPFH R160	15,0 kW	441	18,2	6"	270
DPFH R160	18,5 kW	461	20	6"	280
DPHT R160	15,0 kW	290	27	4"	245
DPHT R160	18,5 kW	310	27	4"	245



11.

DRY MOUNTED PUMPS

Where conditions are suitable, a dry mounted pump is an economically beneficial and highly durable

Lind Jensen Agri's wide selection of slurry pumps, designed for dry mounting, are so flexible that we can always offer a pump that fits your needs.

This applies to all Lind Jensen dry mounted slurry pumps

- ✓ Built-in cutting system for the fine shredding of straw and feed residues
- ✓ Effective – also for liquid manure with very high dry matter
- ✓ Many sizes – from 5.5 kW to 18.5 kW

**We can always
offer a pump that
fits your needs**





Model	kW	Max. capacity m3/h	Max. head	Outlet dimension	Weight kg.
TPA S132	5,5 kW	252	10,1	4" / 6"	147
TPA S132	7,5 kW	265	14,5	4" / 6"	150
TPA S160	11,0 kW	358	13,3	6"	246
TPA S160	15,0 kW	441	18,2	6"	273
TPHT S180	18,5 kW	351	27,5	4"	293



12.

PISTON PUMP

LJM's piston pump is suitable for animal housings where the slurry needs to be pumped efficiently over longer distances.

- ✓ Pumps the manure effectively over long distances
- ✓ The ideal solution for pumping thick liquid slurry
- ✓ Low power consumption compared to traditional pumps
- ✓ Minimal wear
- ✓ Multiple mounting options
- ✓ LJM hydraulic cylinders installed in the piston pump
- ✓ 50 years experience in the production of hydraulic cylinders

**The ideal solution
for pumping thick
liquid slurry**





I estimate the pay-back time to be as low as 2-3 years. This is in addition to the money we save on electricity

Farmer Poul Sørensen - Fjerritslev

PUMPS THE LIQUID MANURE EFFICIENTLY **OVER LONG DISTANCES**

The pumping lines for liquid manure are getting longer for us and that obviously places a higher demand on sizing and the physical equipment.

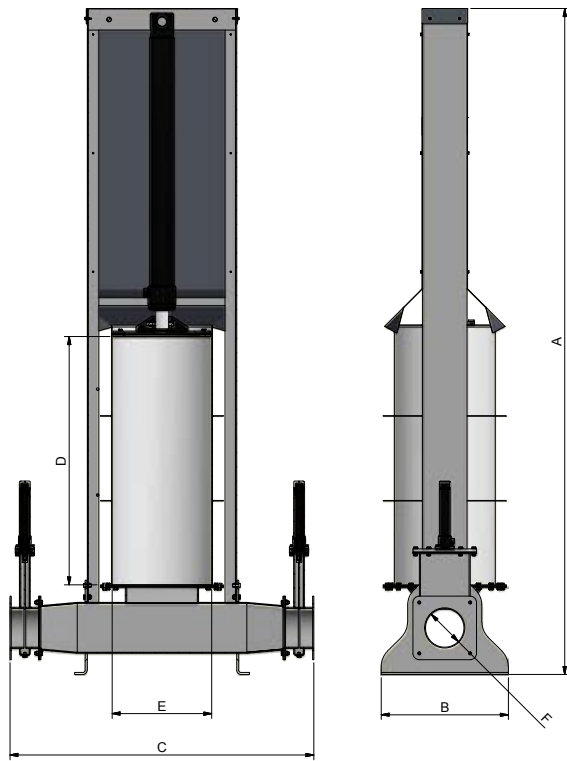
For this reason, we at LJM have specially-developed a program which can calculate the basis of liquid manure lines so that you can be sure your system has the right size.

The farmer Poul Sørensen uses wood chips in his bed booths and had a major challenge pumping the thick liquid manure 900 m from his farm to the tank. This challenge was solved by replacing 2 x 19 kW centrifugal pumps with one piston pump from LJM. It is the perfect solution and it uses far less electricity. Poul has achieved huge financial savings and estimates the payback time to be as little as 2 years.



PISTON PUMP

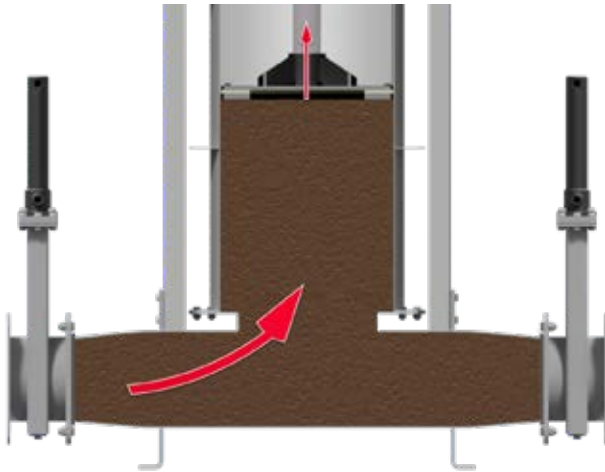
Type	P ₂ kW	I A	A mm	B mm	C mm	D mm	E mm	F mm	Oil flow L/min	Pump pressure bar	m³/t	Flow min	L/
Piston Pump	5,5	10,4	3135	600	1495	1135	Ø450	Ø182	30	5,5	22	360	
Piston Pump	7,5	14,4	3135	600	1495	1135	Ø450	Ø182	30	8,0	22	360	



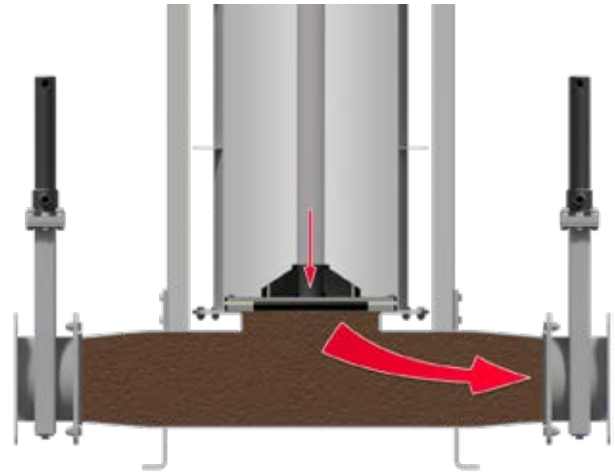
Voltage	400V
I - A	10,4 / 14,4
Pump casing	AISI 316
Hydraulic pressure	Op til 160 bar
Stamp diameter / cylinder	Ø450 mm. / Ø100 mm.
Stroke	1135mm
Valve housing	Galvanized S235
Gate valve plate	HARDOX®



THE SYSTEM **IN OPERATION**




In the suction process, the inlet valve is open, the outlet valve is closed, the piston is in the bottom. The piston retracts and a negative pressure is formed in the piston pump and the slurry is sucked in.



When the piston is in the top and the pump is full, the inlet valve is closed and the outlet valve opens. The piston presses downwards, creating an overpressure pressing the slurry out of the pump and further into the reception tank.

The two valves change back and the suction process will be repeated again.

A photograph of a modern dairy barn with several cows in stalls. The barn has a high ceiling with large windows and a clean, well-lit environment.

**Low power
consumption
compared to
traditional pumps**

LJM - LIND JENSEN

QUALITY IS
THE **KEY**
IN ALL OUR
PRODUCTS



LJM Lind Jensen

Lind Jensen Agri has more than 50 years of experience in the production and marketing of equipment of the highest quality for slurry handling. Every day we work goal-oriented to deliver the right product with the right quality and at the right price to our customers in Denmark and the rest of the world.

Lind Jensen Agri is one of the leading producers of equipment for slurry handling.

From the very beginning, Lind Jensen Agri's products have been at the core of the company's production, which also includes equipment for handling wastewater and biogas liquids and hydraulic cylinders for all needs. These product lines are produced and marketed in their own independent departments and the company employs more than 200 employees in departments in Denmark, China, India and the United States.

The design of the products for wastewater and biogas is based on products for the agricultural sector, while the hydraulics department delivers the hydraulic cylinders that are included in our automated scraper systems. We ourselves handle the whole process from development to production and delivery and servicing and thus ensure that we can always deliver very high quality products with long service intervals and a long lifetime.

Lind Jensen is ISO 9001 certified and works continually with LEAN principles to ensure a cost-effective production flow without sacrificing quality. All relevant staff are trained in Six-Sigma, where the aim is to achieve non-failure sales, production and delivery. At Lind Jensen, we want to be a flexible supplier that delivers the right products at the right price and with short delivery times. That is why fast and efficient service - before, during and after delivery - is crucial for us.

Many years of cooperation with our many customers in Denmark and abroad confirm that these business principles are appreciated by our customers. So, if you want to cooperate with a supplier with over 50 years of experience and know-how, Lind Jensen Agri is the right choice. Before, during and after delivery.

**Lind Jensen Agri is one
of the leading
producers of equipment
for slurry handling**





Lind Jensens Maskinfabrik A/S

Kroghusvej 7, Højmark | DK-6940 Lem St. | Tlf. + 45 97 34 32 00
agro@ljm.dk | **ljm.dk**